

Municipal Administration

The Township provides several basic public services for its residents. These services are administered from Township Hall on West Michigan Avenue. Main offices for police, fire safety, and Westside Water (the municipality's potable water utility) are all located in a complex of several buildings at this location. The Township Clerk, Treasurer, Supervisor and Assessor also work from this location.

Sewerage

The Township does not provide sanitary or stormwater sewerage. These services are provided by the City of Lansing and Ingham County Drain Commissioner's office, respectively.

Public Safety

Both police and fire departments are staffed by full time public safety professionals who serve all parts of the Township and respond to calls for assistance in surrounding communities. The main fire station is located next door to Township Hall, and a second fire station is located in the Groesbeck neighborhood on the south side of Slater Park.

Utilities

Westside Water provides potable water to more than 2,000 households in the Township, the City of Lansing, and Delta Township. Staff is responsible for routine repairs and infrastructure upgrades, and responds to service requests. Township properties on the Eastside are served by the Lansing Board of Water and Light.

Schools

Elementary and secondary education is provided by Lansing Public Schools on the east side of the Township, and by Waverly Community Schools on the Westside. In addition, area school-aged children may

attend an array of private and public schools. National Heritage Academy, an operator of public charter schools, recently expanded its K-6 school on West Saginaw Street.

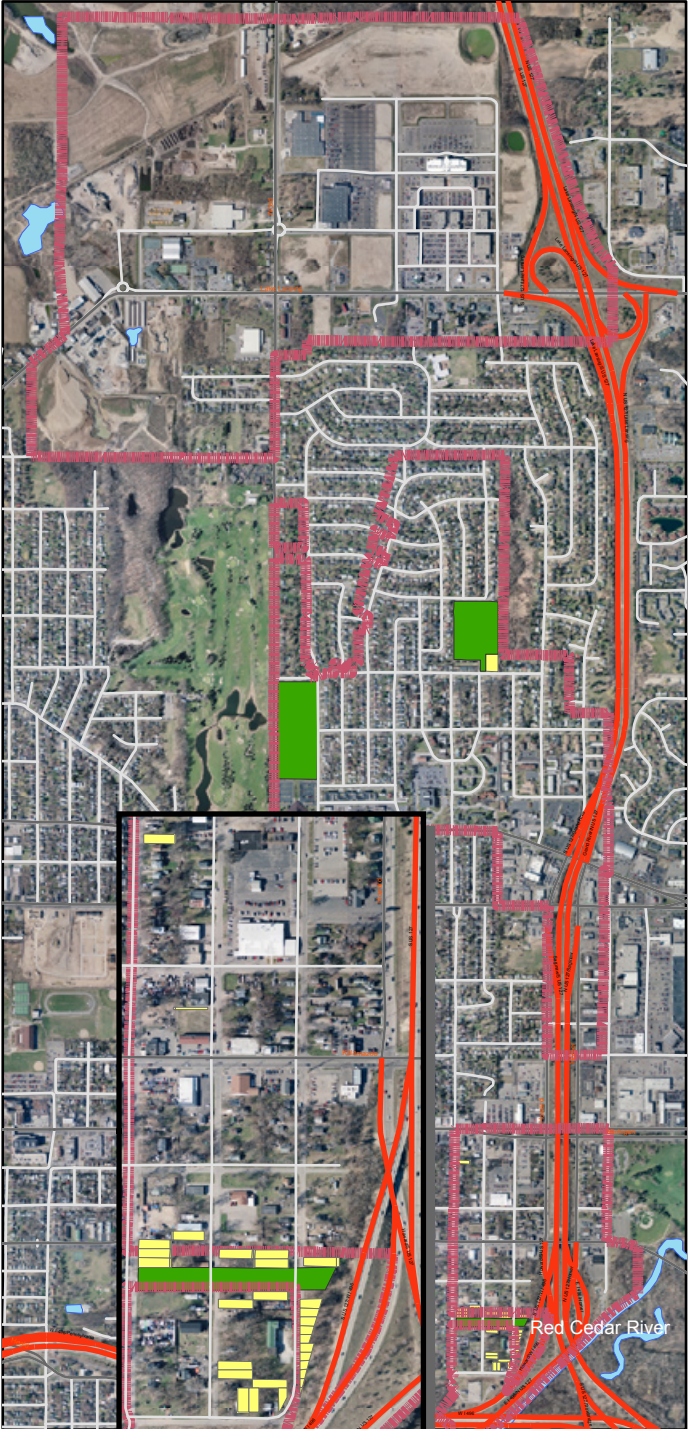
Parks and Recreation





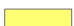
The Township owns and operates several parks on its east and west sides. These facilities vary in size, spatial context, and amenities. Located on the Grand River, Keegan Park offers riverside picnic areas as well as a dense wood that has been left in a natural state. The wood is accessible by rustic trail. Bon Air and Gould parks are smaller neighborhood facilities that feature play structures and picnic equipment. Windemere Park is endowed with large, old growth trees, a small wood, and a recently repaired and extended sidewalk that connects the Westfield and Edgemont subdivisions with the National Heritage Academy charter school and West Saginaw Street. On the Eastside, Elizabeth Park serves the Urbandale neighborhood. Children can use play structures, and picnic tables and grills accommodate cookouts. Slater Park in the Groesbeck neighborhood has tennis and basketball courts, play structures, and a covered meeting area—all of which are frequently used during warmer months. Two ball fields continue to be used for informal, pickup games of softball and other sports. Beginning in 2009, a 7,500 square foot area on the park's south end was converted from open field to a community garden. This initiative was very successful and could be expanded in the near future.

In addition to these facilities, the City of Lansing owns a 120 acre tract of land on Waverly Road between West Saginaw Street and West Michigan Avenue. Operated for decades as a public golf course, the facility has not been opened for 3 years. Despite closure of



Map 14
Lansing Township
Public Facilities &
Township Owned
Land



- Legend**
-  Township boundary
 -  Highways
 -  Major Roads
 -  Public Parks
 -  Public Facilities & Township Owned Land



the facility as a golf course, a sledding hill located off of West Michigan Avenue remains a very popular attraction. Participants at public workshops agreed with near unanimity that the majority of this site should continue to be used as a recreational facility.

Given its sheer size, the former Waverly Golf Course presents an opportunity to create an urban recreational facility of regional significance. Funding the improvements that would enable it to achieve such status is, however, a challenge.

Township Owned Land

Aside from land that is used for parks and public facilities, the Township owns ____ parcels. ____ of these are located in Urbandale, south of Kalamazoo Street.

